



Vocational Training in Public order Management

**SOCIAL WORK
AND POLICING**

Final Conference

SOCIAL WORK AND POLICING
Module 3 - Homelessness

11. Feb. 2021

Online

Miguel Saraiva, Mónica Diniz, Paula Guerra

Co-funded by the
Erasmus+ Programme
of the European Union



The issue: homelessness



We need to devise **new pathways** for understanding, supporting and integrating homeless people in the post-crisis period

410,000 persons are sleeping every night in the streets of European cities

3 million homeless persons in Europe are supported by social welfare systems

4.1 million people at the risk of homelessness every year

(FEANTSA, 2019)

August 24, 2020 03:34 PM



**SOCIAL WORK
AND POLICING**
Vocational Training in Public Order Management

COVID-19 is 'a crisis within a crisis' for homeless people

Associated Press

Homelessness and COVID: High infection rates and social marginalisation haunts Paris' homeless

 COMMENTS

Homelessness During the COVID-19 Pandemic: What to Know

Homeless lives at risk from Covid winter, charities warn

🕒 8 October 2020

COVID-19 could devastate the homeless. How will America pick up the pieces?

A dark, grainy photograph of a homeless shelter interior, showing rows of beds and people in the background.

Nowhere to Go, Serbia's Homeless Fined for Breaking COVID-19 Curfew

Three major concerns



**SOCIAL WORK
AND POLICING**
Vocational Training in Public Order Management



A multifaceted concept that varies between countries

- Not just a person without a proper home (rooflessness, houselessness, inadequate housing)
- Between a stable home and a state of homelessness – there is a **continuum** (Toro & Janisse, 2004) where many facets of the problem may exist and be hidden - FEANTSA Typology



The rise of socio-economic constraints

- **Pressure** from internal and external factors (economic crisis, political unrest, migration)
- Increasing poverty concentration, spatial segregation, and **social inequalities and vulnerabilities** (Madanipour and Weck, 2015; Ranci et al., 2014).
- (COVID-19)



The lack of bridges between social work and police

- **Strategies** to tackle homelessness are still **very much normative**, based on the individual characteristics and focusing on corrective intervention and satisfaction of individual needs
- Homelessness should be regarded as a **social process**, and tackled through a preventive, inter-institutional and integrated approach along with structural measures

Learning objectives

- Address the issues of homelessness and poverty as cornerstones for achieving the goals of integration, **social cohesion and sustainable development**
- Develop **mutual cooperation and trust** between professional groups and gain a wider working **lexicon**
 - community policing teams + homeless outreach teams + intercultural mediators + residents
- Enrich both **individual and collective competences**, and widen the spectrum of the partnership to other professional areas.



social support +
community integration +
police capacity building

group exercises +
study visits + networking
capacity building

What did we aim to teach?



**SOCIAL WORK
AND POLICING**
Vocational Training in Public Order Management

Understand **overall processes** that lead to situations of homelessness

Understand the **multifaceted concept** of homelessness and the need for convergence of definitions and strategies

Understand the **organizational culture** and the spheres of action of both professional groups

Interpret how vulnerable persons experience and **extract meaning** from living without a home

How to build effective cooperation and networking between social workers and the police, in order to **integrate homeless people** in the community.

Understand specific local contexts and the **value of place**

Apply **bottom-up approaches**

Understand the **pros and cons** of working in partnership

Explore **simulated and real scenarios** of intervention

The three-step approach



**SOCIAL WORK
AND POLICING**
Vocational Training in Public Order Management

Prevention

- Close monitoring of the **risk factors** that affect homelessness
- Explore the social but also the territorial **contexts** of these phenomena through data analysis

Intervention

- **Understand profiles** and life trajectories of homelessness
- Research the **day-to-day relationship** with the physical and social environment
- Be aware of the **role** of police and social workers as data collectors

Integration

- Develop and train **professional competences** for social workers and the police to work together
- Determine the underpinning conditions to enable the implementation of **effective partnerships**
- How **multidisciplinary intervention** can grant homeless persons with the tools to foment their social integration.

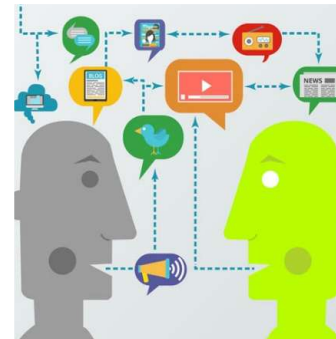
Competence gains



**SOCIAL WORK
AND POLICING**
Vocational Training in Public Order Management

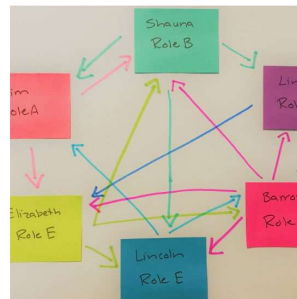


Understand
complexity and
diversity



Enhance channels
of communication

Understand roles



Develop
collaboration paths



Understand
perspectives



We are all in agreement then.

Profile of trainers



**SOCIAL WORK
AND POLICING**
Vocational Training in Public Order Management



- Scientific and disciplinary training in the **field of social sciences and humanities** - special emphasis on sociology, social work, social education, social psychology, criminology,...
- Specific technical competences linked to **working with disadvantaged groups** rooted in ethnography and action-research.
- Work experience at the level of integrated projects of social solidarity and **community policing**.
- Formative experience in the areas of **social exclusion, homelessness and migrations** in the context of advanced marginality.
- **Skills and tools for analysis and intervention**, both in terms of fundamental and applied knowledge (as well in other areas as economy, urbanism, planning,...)

10 hour session plan



**SOCIAL WORK
AND POLICING**

Vocational Training in Public Order Management

Session 3.1. To teach students of social work and police to understand the complexity of working on Homelessness



Introduction



Professional complexity
and diversity



Complexity and
diversity of exclusion



'Playing the *other*'



'Networks and Ties'

10 hour session plan



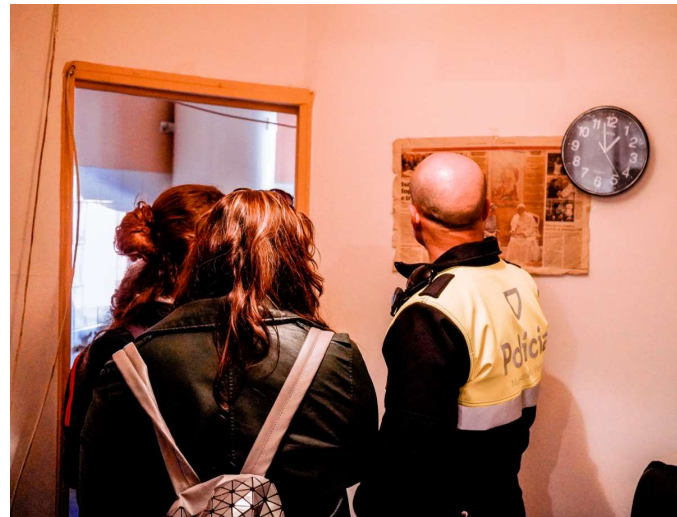
**SOCIAL WORK
AND POLICING**

Vocational Training in Public Order Management

Session 3.2. To train students to observe and extract meaning from real life interactions between vulnerable persons, volunteers and professionals.

120 Direct observation

- Observe real life situations of good practices between social work and police
- Visual ethnography
- Roadbook



‘Housing First’ (Associação Crescer) – visit to the homes of former homeless persons (“É uma casa”) and lunch at a canteen run by former homeless persons (“É um restaurante”)

10 hour session plan



**SOCIAL WORK
AND POLICING**

Vocational Training in Public Order Management

Session 3.3. To teach students of social work and police to understand address homelessness situations more effectively.



Explore the roles of different professionals



Understanding the situation of vulnerable people in the streets



- What has been learned from observation and analysis of interviews and other documents?

'Never Forget'

10 hour session plan



**SOCIAL WORK
AND POLICING**

Vocational Training in Public Order Management

Session 3.4. To teach students of social work and police to develop effective partnerships and best practices to address homelessness and migration situations.



Conditions for collaboration



- Stakeholder mapping
- Stakeholder ecosystem
- 'Social work-Police Guidelines on Homelessness/Migration'



Good practices and channels of communication

